



Copyright ASTM International, 100 Barr Harbor Drive, West
Conshohocken, Pennsylvania 19428, USA. Distributed under
ASTM license agreement by China National Institute of
Standardization (CNIS) - Tel: 86 10 58811350

Designation: E 243 – 09

Standard Practice for Electromagnetic (Eddy-Current) Examination of Copper and Copper-Alloy Tubes¹

This standard is issued under the fixed designation E 243; the number immediately following the designation indicates the year of original adoption or, in the case of revision, the year of last revision. A number in parentheses indicates the year of last reapproval. A superscript epsilon (ϵ) indicates an editorial change since the last revision or reapproval.

This standard has been approved for use by agencies of the Department of Defense.

1. Scope

1.1 This practice² covers the procedures that shall be followed in eddy-current examination of copper and copper-alloy tubes for detecting discontinuities of a severity likely to cause failure of the tube. These procedures are applicable for tubes with outside diameters to 3 1/8 in. (79.4 mm), inclusive, and wall thicknesses from 0.017 in. (0.432 mm) to 0.120 in. (3.04 mm), inclusive, or as otherwise stated in ASTM product specifications; or by other users of this practice. These procedures may be used for tubes beyond the size range recommended, upon contractual agreement between the purchaser and the manufacturer.

1.2 The procedures described in this practice are based on methods making use of encircling annular examination coil systems.

1.3 The values stated in inch-pound units are to be regarded as the standard. The values given in parentheses are mathematical conversions to SI units that are provided for information only and are not considered standard.

NOTE 1—This practice may be used as a guideline for the examination, by means of internal probe examination coil systems, of installations using tubular products where the outer surface of the tube is not accessible. For such applications, the technical differences associated with the use of internal probe coils should be recognized and accommodated. The effect of foreign materials on the tube surface and signals due to tube supports are typical of the factors that must be considered.

1.4 *This standard does not purport to address all of the safety concerns, if any, associated with its use. It is the responsibility of the user of this standard to establish appropriate safety and health practices and determine the applicability of regulatory limitations prior to use.*

¹ This practice is under the jurisdiction of ASTM Committee E07 on Nondestructive Testing and is the direct responsibility of Subcommittee E07.07 on Electromagnetic Method.

Current edition approved June 1, 2009. Published June 2009. Originally approved in 1967. Last previous edition approved in 2004 as E 243 - 97(2004)¹.

² For ASME Boiler and Pressure Vessel Code applications see related Practice SE-243 in the Code.

2. Referenced Documents

2.1 ASTM Standards:³

- B 111/B 111M Specification for Copper and Copper-Alloy Seamless Condenser Tubes and Ferrule Stock
- B 395/B 395M Specification for U-Bend Seamless Copper and Copper Alloy Heat Exchanger and Condenser Tubes
- B 543 Specification for Welded Copper and Copper-Alloy Heat Exchanger Tube
- E 543 Specification for Agencies Performing Nondestructive Testing
- E 1316 Terminology for Nondestructive Examinations

2.2 Other Documents:

- SNT-TC-1A Recommended Practice for Nondestructive Testing Personnel Qualification and Certification⁴
- ANSI/ASNT CP-189 ASNT Standard for Qualification and Certification of Nondestructive Testing Personnel⁴
- NAS-410 NAS Certification and Qualification of Nondestructive Personnel (Quality Assurance Committee)⁵

3. Terminology

3.1 Definitions of Terms Specific to this Standard

3.1.1 The following terms are defined in relation to this standard.

3.1.1.1 *artificial discontinuity reference standard*—a standard consisting of a selected tube with defined artificial discontinuities, used when adjusting the system controls to obtain some predetermined system output signal level. This standard may be used for periodic checking of the instrument during an examination.

3.1.1.2 *percent maximum unbalance standardization standard*—a method of standardization that can be used with

³ For referenced ASTM standards, visit the ASTM website, www.astm.org, or contact ASTM Customer Service at service@astm.org. For *Annual Book of ASTM Standards* volume information, refer to the standard's Document Summary page on the ASTM website.

⁴ Available from American Society for Nondestructive Testing (ASNT), P.O. Box 28518, 1711 Arlingate Ln., Columbus, OH 43228-0518, <http://www.asnt.org>.

⁵ Available from Aerospace Industries Association of America, Inc. (AIA), 1000 Wilson Blvd., Suite 1700, Arlington, VA 22209-3928, <http://www.aia-aerospace.org>.

speed-insensitive instruments (see 3.1.1.4). The acceptance level of the examination is established at the operating examination frequency as an accurate fraction of the maximum unbalance signal resulting from the end effect of a tube. Any low-noise tube from the production run having a squared end may be used as this standard. This standard may be used for periodic checking of the instrument during an examination.

3.1.1.3 *electrical center*—the center established by the electromagnetic field distribution within the examination coil. A constant-intensity signal, irrespective of the circumferential position of a discontinuity, is indicative of electrical centering. The electrical center may be different from the physical center of the examination coil.

3.1.1.4 *speed-sensitive equipment*—examination equipment that produces a variation in signal response with variations in the examination speed. Speed-insensitive equipment provides a constant signal response with changing examination speeds.

3.1.1.5 *off-line examining*—eddy-current examinations conducted on equipment that includes the examination coil and means to propel individual tubes under examination through the coil at appropriate speeds and conditions.

3.1.1.6 *on-line examining*—eddy-current examinations conducted on equipment that includes the examination coil and means to propel tubes under examination through the coil at appropriate speeds and conditions as an integral part of a continuous tube manufacturing sequence.

3.2 *Definitions of Terms*—Refer to Terminology E 1316 for definitions of terms that are applicable to nondestructive examinations in general.

4. Summary of Practice

4.1 Examining is usually performed by passing the tube lengthwise through a coil energized with alternating current at one or more frequencies. The electrical impedance of the coil is modified by the proximity of the tube, the tube dimensions, electrical conductivity and magnetic permeability of the tube material, and metallurgical or mechanical discontinuities in the tube. During passage of the tube, the changes in electromagnetic response caused by these variables in the tube produce electrical signals which are processed so as to actuate an audio or visual signaling device or mechanical marker which produces a record.

5. Significance and Use

5.1 Eddy-current examination is a nondestructive method of locating discontinuities in a product. Signals can be produced by discontinuities located either on the external or internal surface of the tube or by discontinuities totally contained within the walls. Since the density of eddy currents decreases nearly exponentially as the distance from the external surface increases, the response to deep-seated defects decreases.

5.2 Some indications obtained by this method may not be relevant to product quality; for example, a reject signal may be caused by minute dents or tool chatter marks that are not detrimental to the end use of the product. Irrelevant indications can mask unacceptable discontinuities. Relevant indications are those which result from nonacceptable discontinuities. Any indication above the reject level that is believed to be irrelevant

shall be regarded as unacceptable until it is demonstrated by re-examination or other means to be irrelevant (see 10.3.2).

5.3 Eddy-current examination systems are generally not sensitive to discontinuities adjacent to the ends of the tube (end effect). On-line eddy-current examining would not be subject to end effect.

5.4 Discontinuities such as scratches or seams that are continuous and uniform for the full length of the tube may not always be detected.

6. Basis of Application

6.1 *Personnel Qualification*—Nondestructive testing (NDT) personnel shall be qualified in accordance with a nationally recognized NDT personnel qualification practice or standard such as ANSI/ASNT CP-189, SNT-TC-1A, MIL-STD-410, NAS-410, or a similar document. The practice or standard used and its applicable revision shall be specified in the purchase specification or contractual agreement between the using parties.

NOTE 2—MIL-STD-410 is canceled and has been replaced with NAS-410, however, it may be used with agreement between contracting parties.

6.2 *Qualification of Nondestructive Testing Agencies*—If specified in the purchase specification or contractual agreement, NDT agencies shall be evaluated and qualified as described in Practice E 543. The applicable edition of Practice E 543 shall be identified in the purchase specification or contractual agreement between the using parties.

7. Apparatus

7.1 *Electronic Apparatus*—The electronic apparatus shall be capable of energizing the examination coil with alternating currents of suitable frequencies (for example, 1 kHz to 125 kHz), and shall be capable of sensing the changes in the electromagnetic response of the coils. Electrical signals produced in this manner are processed so as to actuate an audio or visual signaling device or mechanical marker which produces a record.

7.2 *Examination Coils*—Examination coils shall be capable of inducing current in the tube and sensing changes in the electrical characteristics of the tube. The examination coil diameter should be selected to yield the largest practical fill-factor.

7.3 *Driving Mechanism*—A mechanical means of passing the tube through the examination coil with minimum vibration of the examination coil or the tube. The device shall maintain the tube substantially concentric with the electrical center of the examination coil. A uniform speed ($\pm 5.0\%$ speed variation maximum) shall be maintained.

7.4 *End Effect Suppression Device*—A means capable of suppressing the signals produced at the ends of the tube. Individual ASTM product specifications shall specify when an end effect suppression device is mandatory.

NOTE 3—Signals close to the ends of the tube may carry on beyond the limits of end suppression. Refer to 9.5.

8. Reference Standards

8.1 *Artificial Discontinuity Reference Standard*:

8.1.1 The tube used when adjusting the sensitivity setting of the apparatus shall be selected from a typical production run and shall be representative of the purchaser's order. The tubes shall be passed through the examination coil with the instrument sensitivity high enough to determine the nominal background noise inherent in the tubes. The reference standard shall be selected from tubes exhibiting low background noise. For on-line eddy-current examining, the reference standard is created in a tube portion existent in the continuous manufacturing sequence or in other forms as allowed by the product specification.

8.1.2 The artificial discontinuities shall be spaced to provide signal resolution adequate for interpretation. The artificial discontinuities shall be prepared in accordance with one of the following options:

(a) A round bottom transverse notch on the outside of the tube in each of three successive transverse planes at 0, 120, and 240° (Fig. 1).

(b) A hole drilled radially through the tube wall in each of three successive transverse planes at 0, 120, and 240° (Fig. 2).

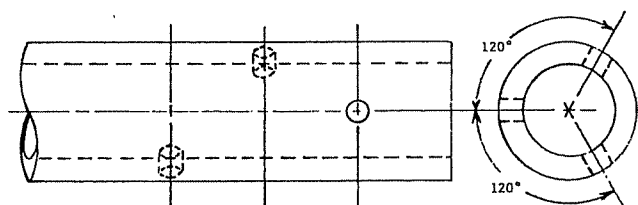
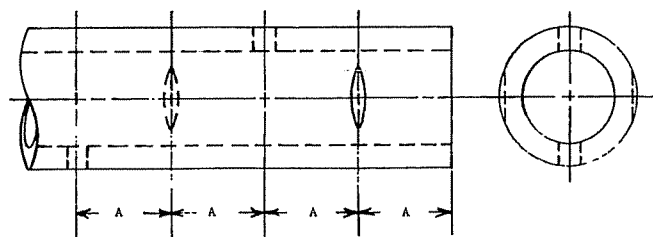


FIG. 2 Reference Standard with Three Holes

(c) One round bottom transverse notch on the outside of the tube at 0° and another at 180°, and one hole drilled radially through the wall at 90° and another at 270°. Only one notch or hole shall be made in each transverse plane (Fig. 3).



NOTE 1—A = Space to provide signal resolution adequate for interpretation.

FIG. 3 Reference Standard with Two Notches and Two Holes

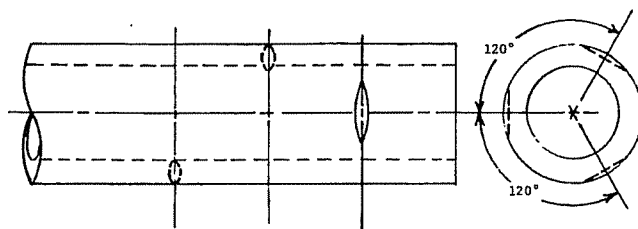
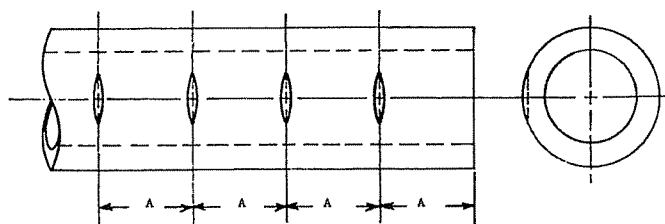


FIG. 1 Reference Standard with Three Notches

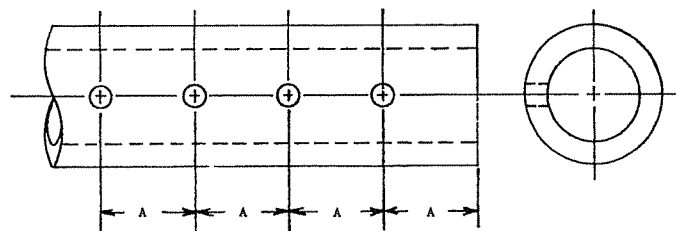
(d) Four round bottom transverse notches on the outside of the tube, all on the same element of the tube (Fig. 4).



NOTE 1—A = Space to provide signal resolution adequate for interpretation.

FIG. 4 Reference Standard with Four Notches in Line

(e) Four holes drilled radially through the tube wall, all the same element of the tube (Fig. 5).



NOTE 1—A = Space to provide signal resolution adequate for interpretation.

FIG. 5 Reference Standard with Four Holes in Line

8.1.2.1 *Round Bottom Transverse Notch*—The notch shall be made using a suitable jig with a 0.250-in. (6.35-mm) diameter No. 4 cut, straight, round file. The outside surface of the tube shall be stroked in a substantially straight line perpendicular to the axis of the tube. The notch depth shall be in accordance with the ASTM product specification or Appendix X1 if the product specification does not specify and shall not vary from the notch depth by more than ± 0.0005 in. (± 0.013 mm) when measured at the center of the notch (see Table X1.1).⁶

NOTE 4—Tables X1.1 and X1.2 should not be used for acceptance or rejection of materials.

8.1.2.2 *Drilled Holes*—The hole shall be drilled radially through the wall using a suitable drill jig that has a bushing to guide the drill, care being taken to avoid distortion of the tube while drilling. The drilled hole diameter shall be in accordance with the ASTM product specification or Appendix X1 if the product specification does not specify and shall not vary by more than +0.001, -0.000 in. (+0.026 mm) of the hole diameter specified (see Table X1.2) (Note 4).⁶

8.1.2.3 *Other Artificial Discontinuities*—Discontinuities of other contours may be used in the reference standard by mutual agreement between supplier and purchaser.

⁶ Tables X1.1 and X1.2 are extracted from Specifications B 111, B 395, and B 543.

订单号:201007141517387018 购买日期:2010-07-14 授权用户:杨丽娟

8.2 Percent Maximum Unbalance Reference Standard—This method of standardization shall be used only with speed-insensitive equipment, and equipment specifically designed or adapted to accommodate the use of this calibration method. Maximum unbalance of differential coils is obtained by placing the squared end of a tube in only one of the differential coils and using an accurately calibrated attenuator to obtain the (100 %) maximum unbalance signal. A percentage of the maximum unbalance signal shall define the examination acceptance level at a specific operating frequency and this percentage shall be obtained from the ASTM product specification.

8.3 Other Reference Standards—Other reference standards may be used by mutual agreement between supplier and purchaser.

NOTE 5—Artificial discontinuities and the percent of maximum unbalance are not intended to be representative of natural discontinuities or produce a direct relationship between instrument response and discontinuity severity; they are intended only for establishing sensitivity levels as outlined in Section 9. The relationship between instrument response and discontinuity size, shape, and location is important and should be established separately, particularly as related to examination frequency.

9. Adjustment and Standardization of Apparatus Sensitivity

9.1 The tube manufacturer shall select equipment, reference standard, and examination parameters consistent for the product, unless otherwise agreed upon between manufacturer and purchaser.

9.2 When using the artificial discontinuity reference standard, prepared in accordance with one of the five options, adjust the apparatus to the lowest sensitivity required to detect the following:

9.2.1 For Figs. 1-3: all artificial discontinuities in the standard. The tube speed maintained during standardization shall be the same as the speed used in production testing.

9.2.2 For Figs. 4 and 5: a minimum of two of the four artificial discontinuities as the tube is rotated by 120° intervals through 0, 120, and 240°, or by 90° intervals through 0, 90, 180, and 270° on successive passes. The tube speed maintained during standardization shall be the same as the speed used in production testing.

9.3 When using the percent maximum unbalance reference standard, adjust the apparatus to the percent unbalance called for in the ASTM product specification.

NOTE 6—Sensitivity control settings are usually indicated by arbitrary numbers on the control panel of the testing instruments. These numerical settings differ among instruments of different types. It is, therefore, not proper to transfer numerical settings on one instrument to those of another instrument, unless the percent maximum unbalance reference standard is used. Even among instruments of the same design and from the same manufacturer, sensitivity control settings may vary. Undue emphasis on the numerical value of sensitivity control settings is not justified and shall not be used unless referenced accurately to the maximum unbalance signal.

9.4 Discard and replace the tube used as the reference standard when erroneous signals are produced from mechanical, metallurgical, or other damage to the standard.

9.5 Determine the length of tubing requiring suppression of end effect signals by selecting a tube of low background noise and making a series of reference holes or notches at 0.5-in. (12.7-mm) intervals near the end of this special tube. Pass the tube through the examination coil at the production examination speed with the artificial discontinuities end first, and then with the artificial discontinuities end last. Determine the distance from the tube end at which the signal response from successive discontinuities is uniform with a recording device such as a pen recorder or memory oscilloscope. Use a signal suppression method (photo relay, mechanical switches, or proximity devices are commonly used) to permit examining only when the length of tubing exhibiting uniform signals is within the examination coil. The section of tube passing through the examination coil during end effect suppression is not examined in accordance with 9.2 or 9.3.

9.5.1 As an option to 9.5, when a recording device is not available, the length of tubing requiring end suppression may be determined by selecting a tube of low background noise and making a reference hole or notch at 6 to 8 in. (152 to 203 mm) from the tube end. Pass the tube through the examination coil at the production examination speed with the artificial discontinuity end first and then with the artificial discontinuity end last. If the artificial discontinuity is not detected, another artificial discontinuity should be made further from the end. If it is detected, cut off 0.5-in. (12.7-mm) increments from the end of the tube until the artificial discontinuity is no longer detected. The shortest distance from the end that the artificial discontinuity can be detected is that length of tube which shall require end effect signal suppression.

10. Procedure

10.1 Electrically center the tubing in the examination coil at the start of the examination run. The tube manufacturer may use the artificial discontinuity reference standard or prepare a separate tube for this purpose in accordance with 8.1 and 8.2. Pass the tube through the examination system and mechanically adjust its position in the examination coil such that the requirements of 9.2 are satisfied.

10.2 Standardize the examination system at the start of the examination run and at periodic intervals (for example, every 2 h) of continuous operation or whenever improper functioning of the system is suspected.

10.3 Pass the tubes through the examination system standardized as described in Section 9.

10.3.1 Accept those tubes that produce output signals conforming to the limits in the applicable ASTM product specification.

10.3.2 Tubes that produce output signals not conforming to the limits in the applicable ASTM product specification may, at the option of the manufacturer, be set aside for re-examination (see 5.2). Upon re-examination, accept the tubes if the output signals are within acceptable limits (10.3.1) or demonstrated by other re-examination to be irrelevant.

10.4 Tubes may be examined at the finish size after the final anneal or heat treatment, or at the finish size prior to the final anneal or heat treatment unless otherwise agreed upon between the supplier and the purchaser.

11. Keywords

11.1 electromagnetic (eddy current) testing; NDT; nondestructive testing; copper; tubing

APPENDIX

(Nonmandatory Information)

X1. TABLES
TABLE X1.1 Notch Depth


Tube Wall Thickness, in.	Tube Outside Diameter, in.		
	Over ¼ to ¾, incl	Over ¾ to 1¼, incl	Over 1¼ to 3⅞, incl
Over 0.017–0.032	0.005	0.006	0.007
Incl 0.032–0.049	0.006	0.006	0.0075
Incl 0.049–0.083	0.007	0.0075	0.008
Incl 0.083–0.109	0.0075	0.0085	0.0095
Incl 0.109–0.120	0.009	0.009	0.011

Tube Wall Thickness, mm	Tube Outside Diameter, mm		
	Over 6 to 19, incl	Over 19 to 32, incl	Over 32 to 79, incl
Over 0.43–0.61	0.13	0.15	0.18
Incl 0.61–1.3	0.15	0.15	0.19
Incl 1.3–2.1	0.18	0.19	0.20
Incl 2.1–2.8	0.19	0.22	0.24
Incl 2.8–3.0	0.23	0.23	0.28

TABLE X1.2 Diameter of Drilled Holes

Tube Outside Diameter	Diameter of Drilled Holes	Drill No.
in.	in.	
¼ to ¾, incl	0.025	72
Over ¾ –1, incl	0.031	68
Over 1–1¼, incl	0.036	64
Over 1¼ –1½, incl	0.042	58
Over 1½ –1¾, incl	0.046	56
Over 1¾ –2, incl	0.052	55

Tube Outside Diameter	Diameter of Drilled Holes	Drill No.
mm	mm	
6.0–19.0, incl	0.635	72
Over 19.0–25, incl	0.785	68
Over 25–32, incl	0.915	64
Over 32–38, incl	1.07	58
Over 38–45, incl	1.17	56
Over 45–50, incl	1.32	55

 E 243 – 09

ASTM International takes no position respecting the validity of any patent rights asserted in connection with any item mentioned in this standard. Users of this standard are expressly advised that determination of the validity of any such patent rights, and the risk of infringement of such rights, are entirely their own responsibility.

This standard is subject to revision at any time by the responsible technical committee and must be reviewed every five years and if not revised, either reapproved or withdrawn. Your comments are invited either for revision of this standard or for additional standards and should be addressed to ASTM International Headquarters. Your comments will receive careful consideration at a meeting of the responsible technical committee, which you may attend. If you feel that your comments have not received a fair hearing you should make your views known to the ASTM Committee on Standards, at the address shown below.

This standard is copyrighted by ASTM International, 100 Barr Harbor Drive, PO Box C700, West Conshohocken, PA 19428-2959, United States. Individual reprints (single or multiple copies) of this standard may be obtained by contacting ASTM at the above address or at 610-832-9585 (phone), 610-832-9555 (fax), or service@astm.org (e-mail); or through the ASTM website (www.astm.org).

订单号:201007141517387018 购买日期:2010-07-14 授权用户:杨丽娟

由中国标准化研究院标准馆根据ASTM授权协议进行销售
地址:北京市海淀区知春路4号 邮编:100088 电子邮件:guodh@cnis.gov.cn